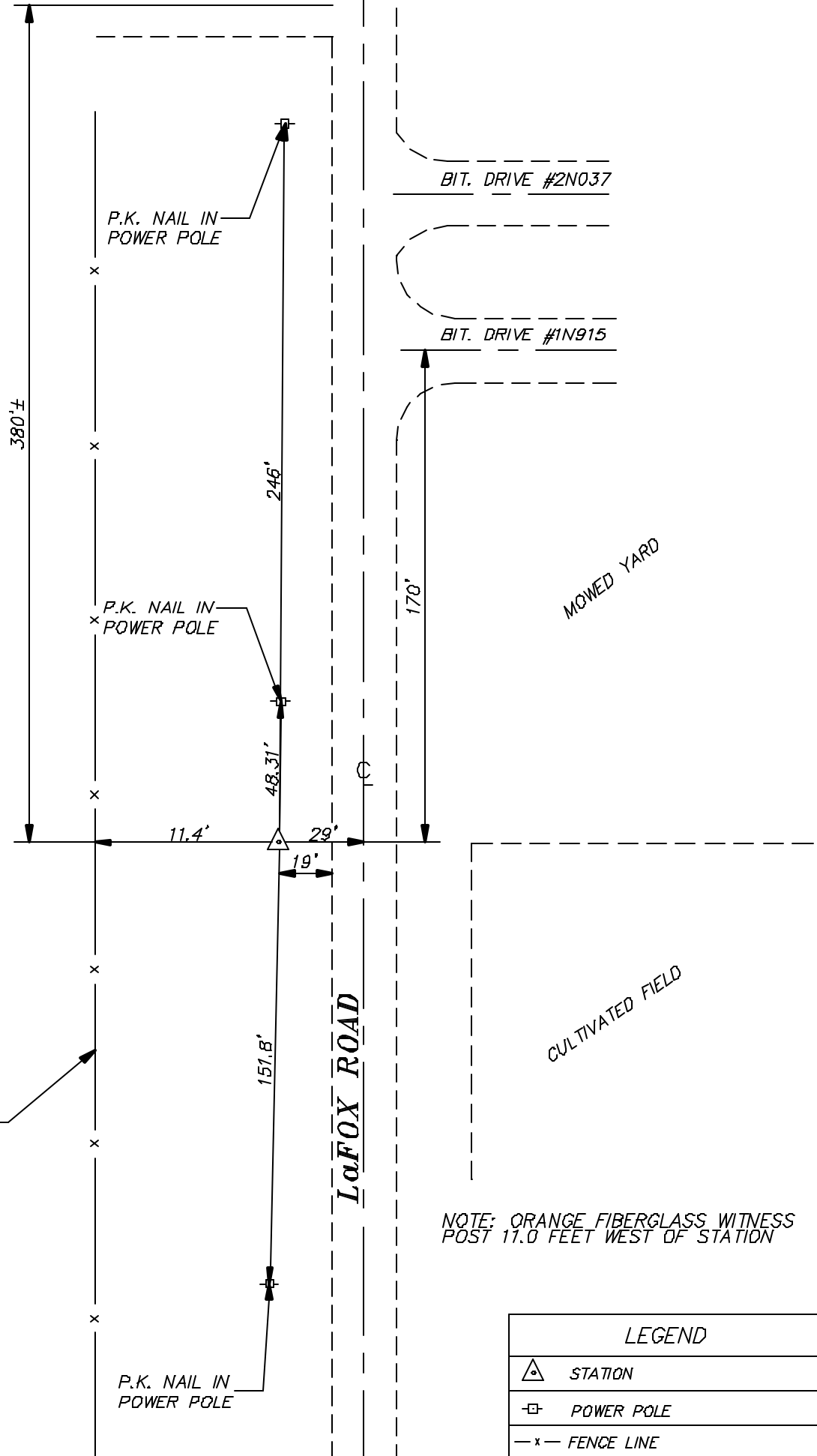


DILLON FIELD DR.



P.K. NAIL IN POWER POLE

P.K. NAIL IN POWER POLE

P.K. NAIL IN POWER POLE

BIT. DRIVE #2N037

BIT. DRIVE #1N915

MOWED YARD

CULTIVATED FIELD

NOTE: ORANGE FIBERGLASS WITNESS POST 11.0 FEET WEST OF STATION

LEGEND

△ STATION

⊠ POWER POLE

-x- FENCE LINE



NOT TO SCALE