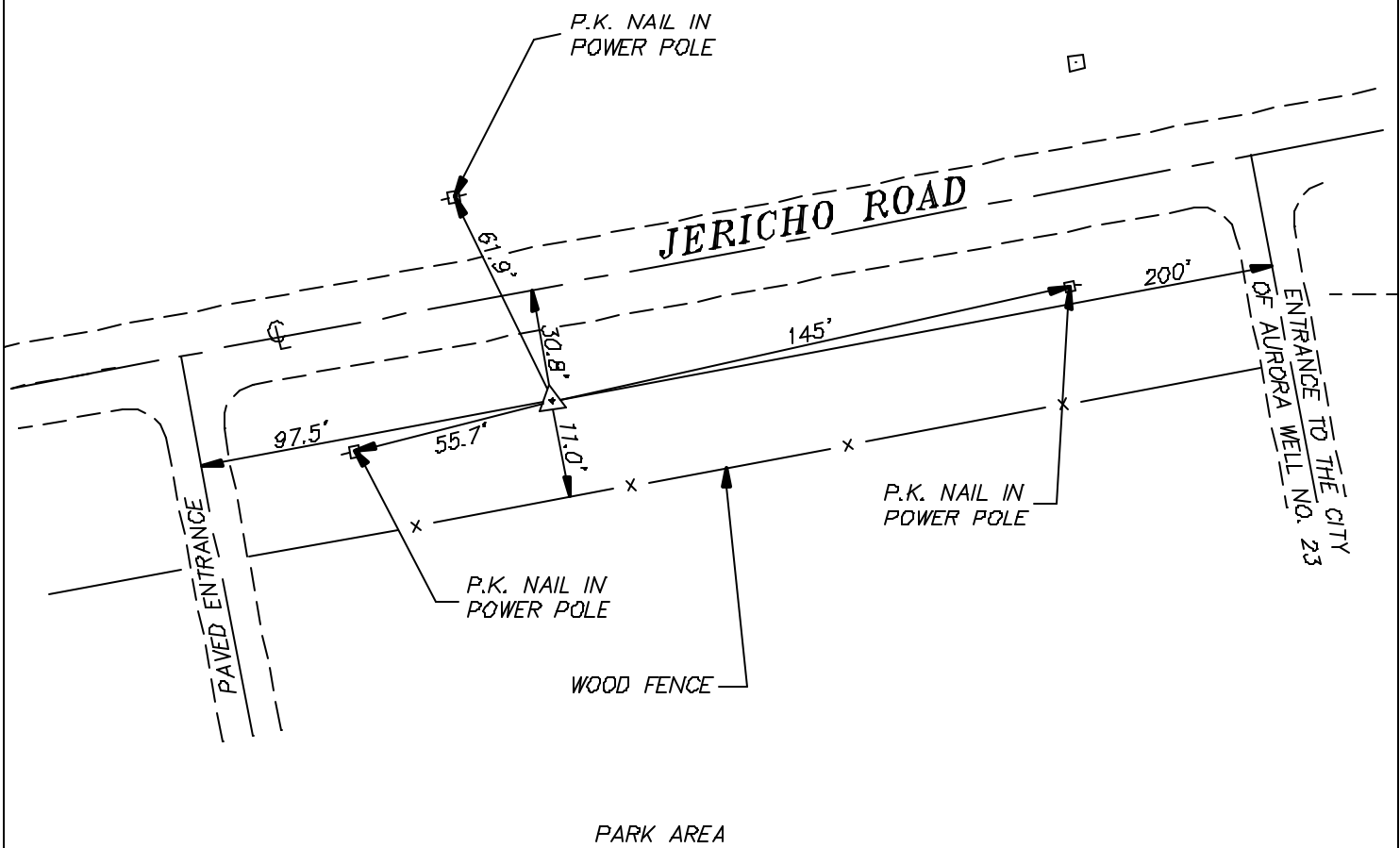
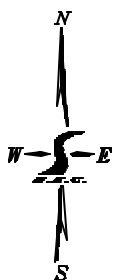


CULTIVATED FIELD



NOTE: ORANGE FIBERGLASS WITNESS POST IS 11.0 FT SOUTHEAST OF STATION.

APPROXIMATE LOCATION:
 STATION IS 360 FT WEST OF BARNES RD,
 0.6 MILE WEST OF ORCHARD RD,
 3.0 MILE EAST OF RT 47



NOT TO SCALE

LEGEND	
	STATION
	FENCE LINE
	UTILITY BOX
	POWER POLE