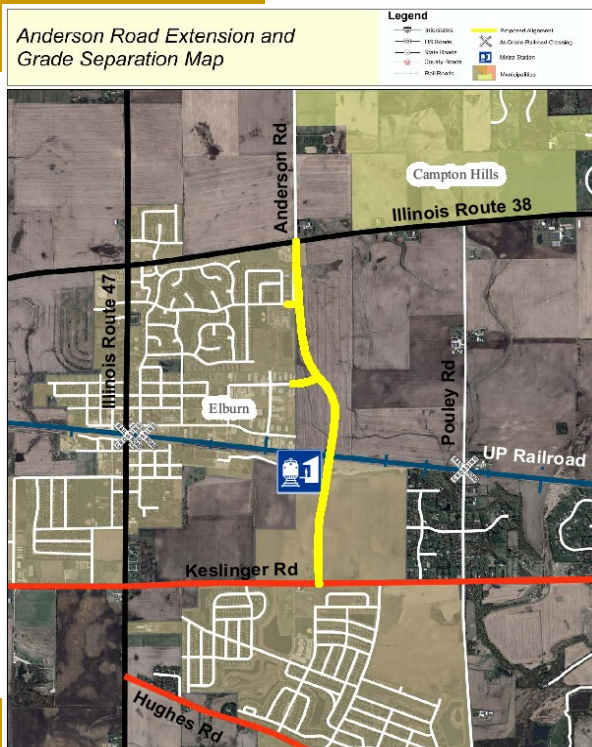


ANDERSON ROAD EXTENSION AND GRADE SEPARATION

A SAFE TRANSPORTATION ALTERNATIVE: A PRIORITY FOR KANE COUNTY

Anderson Road Extension and Grade Separation Map



PROJECT FEATURES

- New 2 Mile Roadway and Bridge/Overpass**
 - Provides Travel Route Alternatives
 - Improves Response Time for Emergency Vehicles
 - Offers a Class II Truck Route
- Safe Grade-Separated Railroad Crossing**
- Direct Access to the Elburn Metra Station**
- Travel Mode Alternatives**
 - Provides Bicycle/Pedestrian Infrastructure
 - Promotes Transit Oriented Development
- Public and Private Sector Partnerships**
 - Kane County, Village of Elburn, Blackberry Township, Metra, Union Pacific Railroad, and Landowners
- Expedited Construction Schedule**
 - Shovel-Ready, Pending Land Acquisition
- Funding Commitments**
 - Federal, State and Local Sources
 - Engineering and Land Acquisition Completed with Local Funds

ECONOMIC BENEFITS

- Provides needed construction jobs
- Spurs economic development
- Reduces traffic congestion/fuel consumption
- Connects residents to retail, service, commercial, and educational land uses

PROJECT SUPPORT

MAINTAINING FUNDING COMMITMENTS

Federal, State and Local funding commitments are critical to the construction of the Anderson Road Extension and Grade Separation project. The success of the project is dependent on each of the fund sources below. The final amount derived from each fund source may change.

■ CONSTRUCTION—FUNDING SOURCES:

■ HPP	High Priority Project (SAFETEA-LU)	\$ 6,326,256
■ STP	Surface Transportation Program	\$ 2,559,575
■ ITEP	IL Transportation Enhancement Program	\$ 505,110
■ TARP	Truck Access Route Program	\$ 119,100
■ Kane County	Potentially reimbursed by ICC Funds	\$ 4,901,608

■ TOTAL \$ 14,411,649

■ ICC	Illinois Commerce Commission (Available Reimbursement)	\$ 7,944,000
-------	---	--------------

CONTACT:

Steve Coffinbargar
Assistant Director of Transportation
Kane County Division of Transportation

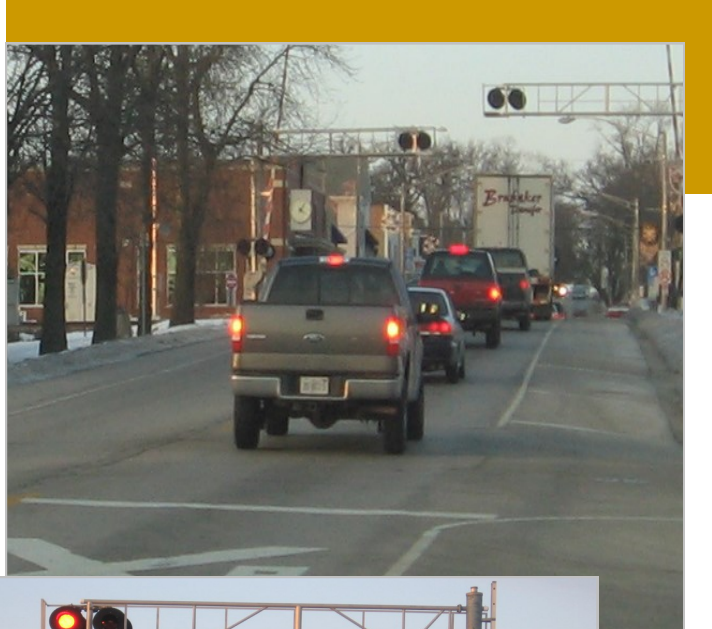
Office: (630) 584-1170

Email: kdotcomments@countyofkane.org



PROJECT STATUS

- Construction Initiated Fall 2013
- Target Completion Summer/Fall 2015
(Completion is weather dependent)



Train Frequency and Delays

- 105 Trains per Day
- Railroad Crossing Gates Down ~3 Hrs/Day
- No Existing Bridges or Underpasses Within the Village of Elburn
- A Community Divided: 7-miles of "Adverse Travel" to Avoid Gates Down at UPRR/IL 47 At-Grade Crossing

