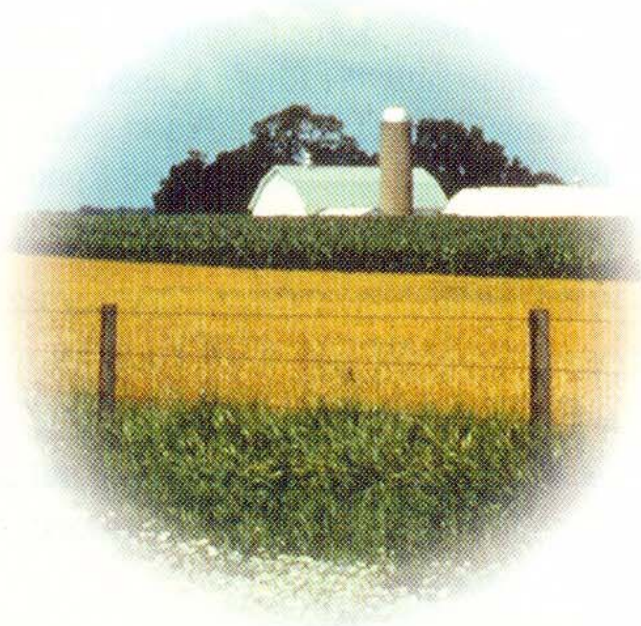


EVERYBODY NEEDS BEAUTY

as well as bread,

places to play in

and pray in,



where nature may heal

and give strength

to body and soul alike.

John Muir, The Yosemite

A PROGRAM OF THE
KANE COUNTY DEVELOPMENT DEPARTMENT
AND
THE KANE COUNTY DIVISION OF TRANSPORTATION



ANY OF THE ROADS IN KANE COUNTY reveal the rural character of the area. Views of the country-

side from these roads provide a sense of stability in a fast-changing world. Points of visual interest along rustic roads, both natural and man-made, add to the enjoyment of roadside scenery and to a sense of place. In Kane County, rustic roads provide views of expansive woods and gently rolling farm fields, the Fox River and its tributaries, autumn color, farmhouses, barns, hedgerows, and churches.

Roadside land is often the first and most visible land to be converted to residential or commercial uses. Kane County has taken the lead in establishing the Rustic Roads Program to protect some of its rural roads and scenic vistas for future generations. The Rustic Roads Program promotes:

1. A SENSE OF PLACE, by preserving community identity and quality of life;

2. RESOURCE PRESERVATION, by protecting the significant scenic, natural and historic resources within road corridors;

3. RECREATION, by providing enjoyment for those who drive for pleasure and sightseeing; and

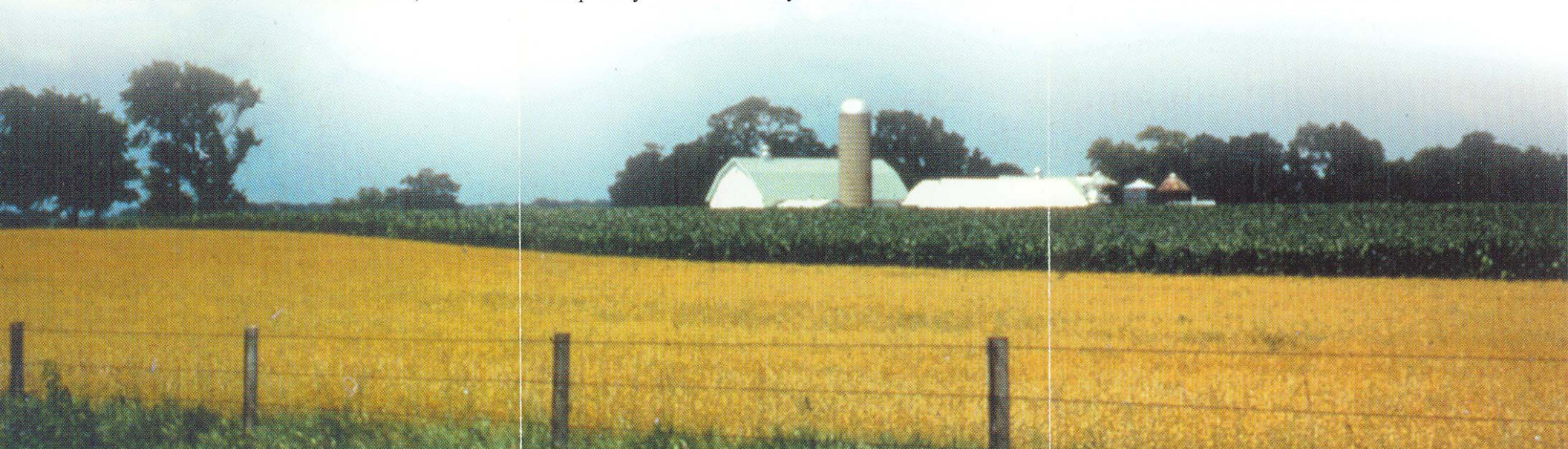
4. ECONOMIC DEVELOPMENT, by generating tourist revenue through the promotion of the scenic beauty of the county.

BACKGROUND

The overall objective of the Rustic Roads Program is to preserve and enhance Kane County's rural character while incorporating new development and transportation needs as subtly as possible. The program was developed in response to two of the Strategic Objectives adopted by resolution on August 12, 1997, by the County Board. Objectives three and five set forth in the resolution state that the board will work *"To maintain and preserve the natural beauty of Kane County"* and *"To promote responsible, managed growth patterns through intergovernmental planning agreements."* In addition, both the County's 2020 Transportation Plan and 2020 Land Resource Management Plan cited the need for and desirability of establishing a Rustic Roads Program in Kane County. On July 11, 2000, the Program was adopted by the Kane County Board.

OVERVIEW OF PROCESS

- The Rustic Roads program was established to preserve both roads and the surrounding features that create their character (the road corridor). Designated road corridors minimally include the road right-of-way and can also include properties and features adjacent to the right-of-way. The program applies to roads located in unincorporated Kane County and can include municipal roads through intergovernmental agreements.
- The designation process includes gathering input from property owners within and adjacent to nominated road corridors, the appropriate highway authority, public officials and other governmental jurisdictions.
- Rustic Road designation does not "freeze" roads in time. During the designation process, a Corridor Management Plan is developed which defines the significant features of the road corridor that should be protected and enhanced. Traffic and life safety issues continue to be addressed while those features are preserved.



FEATURES OF RUSTIC ROADS

NATURAL FEATURES:

- Expansive views, such as those that overlook stream valleys
- Unusual land forms, ridgelines, ravines, narrow valleys, and rock outcrops
- Water
- Woods
- Wildflower glades, evergreen groves, flowering native trees, and shrub masses
- Other areas of native vegetation

BUILT FEATURES:

- Churches and old cemeteries
- Farmsteads
- Architecturally and/or historically significant buildings
- Monuments, memorials, and statues
- Historical markers
- Concrete automobile club guideposts
- Railroad and accessory features
- Designed landscapes
- Roadway pavement, drainage, bridges, tunnels, and other features
- Local activity centers, such as farm supply stores, village stores, inns, mills, factories, and institutions



FOR MORE INFORMATION, CONTACT:

KANE COUNTY DEVELOPMENT DEPARTMENT

719 BATAVIA AVE., GENEVA, IL 60134

PHONE: 630.232.3480

OR

KANE COUNTY DIVISION OF TRANSPORTATION

41W011 BURLINGTON RD., ST. CHARLES, IL 60175

PHONE: 630.584.1170

